

BPW SERIES

SILICON PIN PHOTO DIODES

A range of PIN photodiodes encapsulated in economical plastic packages which are clear or incorporate a daylight filter which provides sensitivity to infra-red radiation only, with high rejection of wavelengths less than 700nm. The devices have low junction capacitance and thus are capable of fast switching speeds.

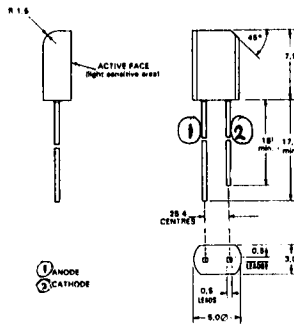
SUITABLE APPLICATIONS

Filtered options — IR remote-control for television, hi-fi systems, slide projectors, model cars, trains, etc., garage door, domestic appliances, automobile security. Perfectly matched to GaAs IRED emission.

Clear options — General purpose light sensing, street lighting.

INFRA-RED PIN DIODE PHOTO DETECTORS

Device Type	Photo Sensitive Area mm ²	Package Ref.	CHARACTERISTICS at 25°C								
			∅	I_L and V_{OC} $E_s = 1mW/cm^2$ $\lambda = 950nm$ $V_R = 5V$ μA		I_R at V_R $E_s = 0$		V_{BR} $I_R = 100\mu A$ V	$\lambda_p/\lambda_{0.5}$ nm	C_j $V_R = 3V$ $f = 1MHz$ $E_s = 0$ pF	t_{on}/t_{off} $V_R = 10V$ $R_L = 1k\Omega$ nS
				mV	nA	V					
BPW41	7.25	Fig. 7	± 65°	(> 25)45	350	2(< 30)	10	> 32	925/ 820 to 1040	25(< 40)	50



BPW41